

2021 12

\_\_\_\_\_

A

A

A

"

"

"

"



								市盈率历史分
68.4	创业板综	-1.10	3.87	2.58	8.07	2.25	28.48	
78.1	中证50	0.32	10.58	7.28	27.84	22.35	92.26	
62.3	沪深300	-1.46	-2.29	1.69	-9.53	-13.06	10.76	
55.1	中证500	-0.03	4.35	0.36	14.19	13.91	20.56	
5.0	股票							
52.6	法国CAC40	-5.40	-1.22	0.51	20.06	21.07	20.60	
1	德国DAX	-6.30	-3.80	-4.95	13.23	10.07	15.12	
0	MSCI新兴市场	-3.89	-4.99	-5.69	-1.49	-6.11		

wind

/

2021 11 30

P/E TTM

P/E TTM

50

2019 12 31

2010 6 1

2010 1 1

A

11

Taper



10 3.5%

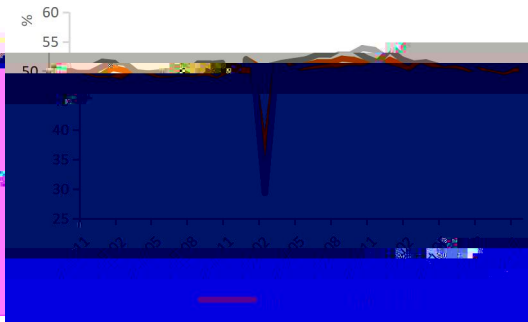
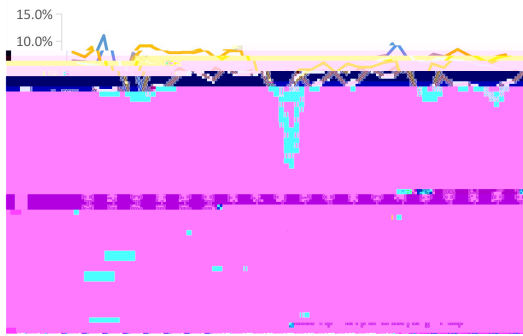
5.0% 0.2 6.0%

11.1% 2.5%

5.0% 10 PMI 49.2 PMI 48.8

11

PMI PMI 50.1 49.4



1-10

6.1%

3.9%

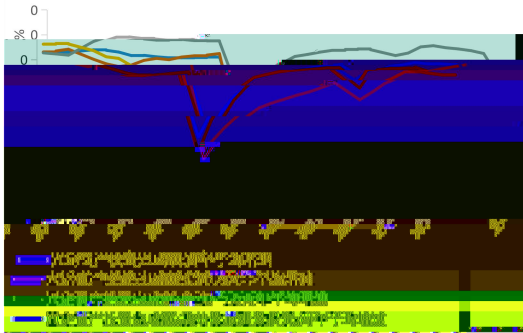
7.4%

0.72%

14.2%

3.8%

0.5



10

10

4.9%

4.6%

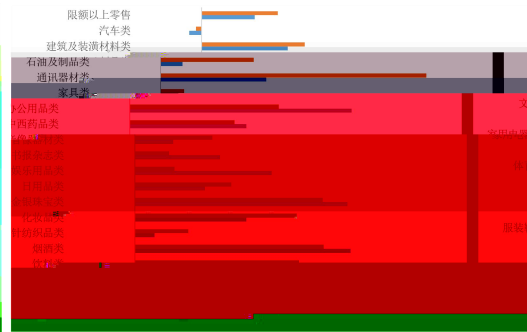
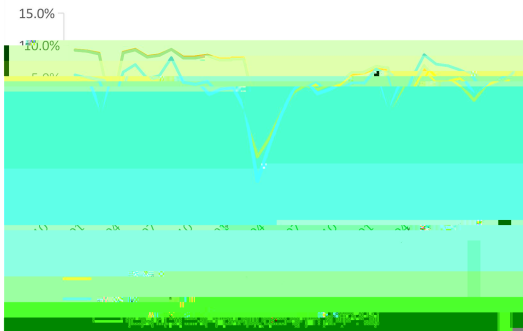
5.2%

5.0%

4.6%

5.8%

11



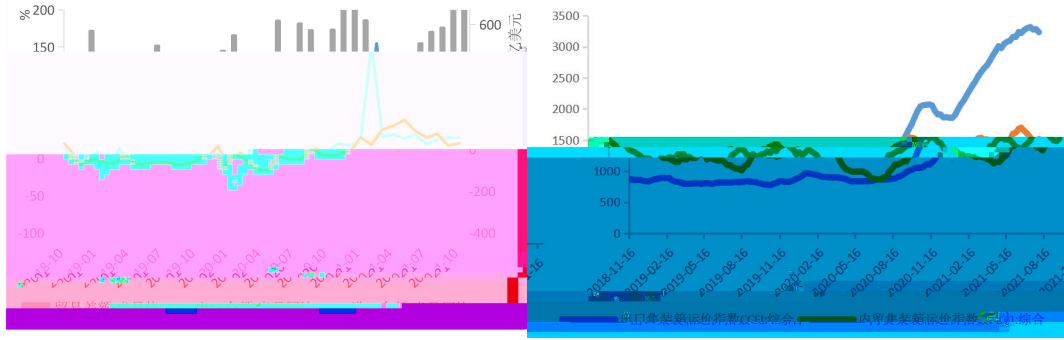
10

27.1%

20.6%

9.7%

&\$&% %%



PPI

13. 5%

CPI - PPI

12% CPI

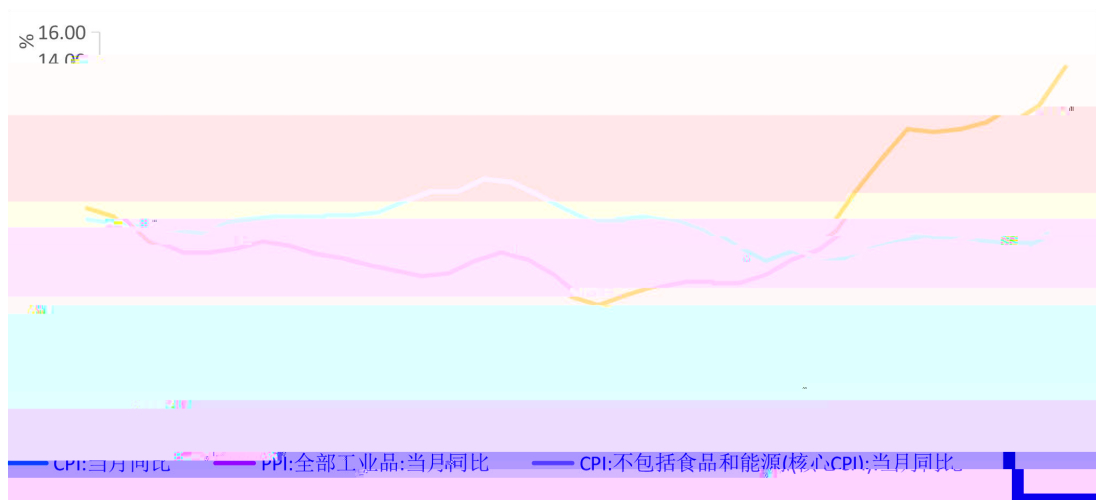
0. 7%

1. 5%

5

CPI

1. 3%



10 M

2. 8%

0. 9

M2

8. 7%

0. 4

1

MLF



10

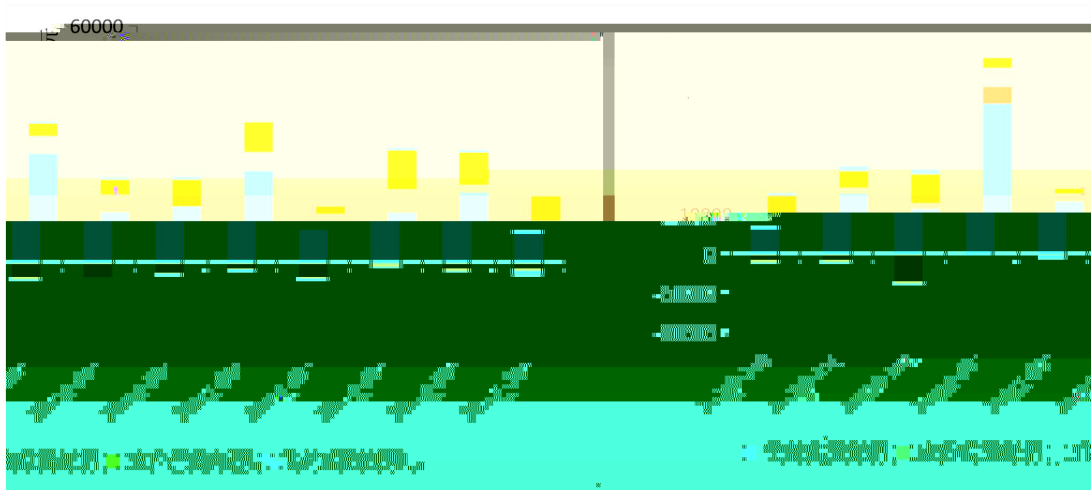
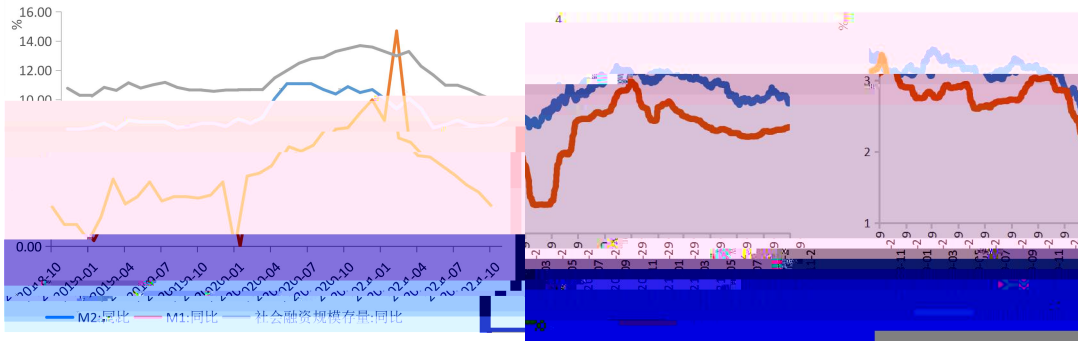
10%

10

1.45

2020

0.62



10

PMI

11 3

Taper

&\$&% %%

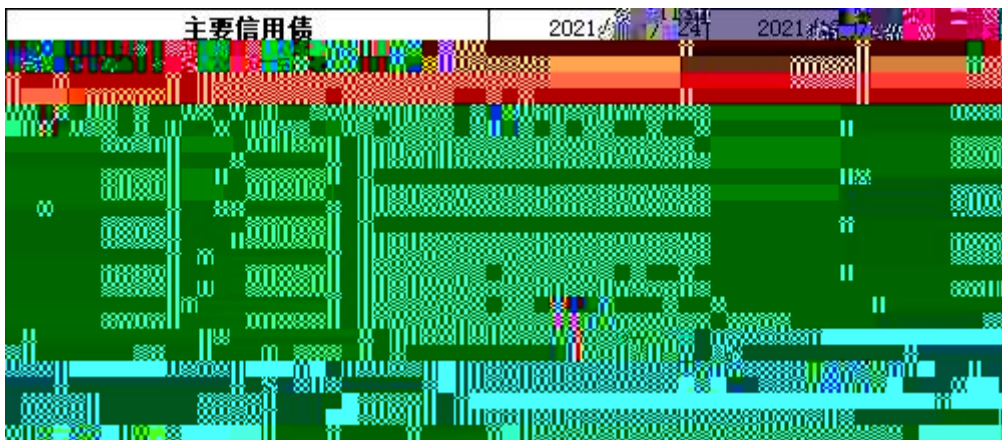




4.

10

Taper





taper

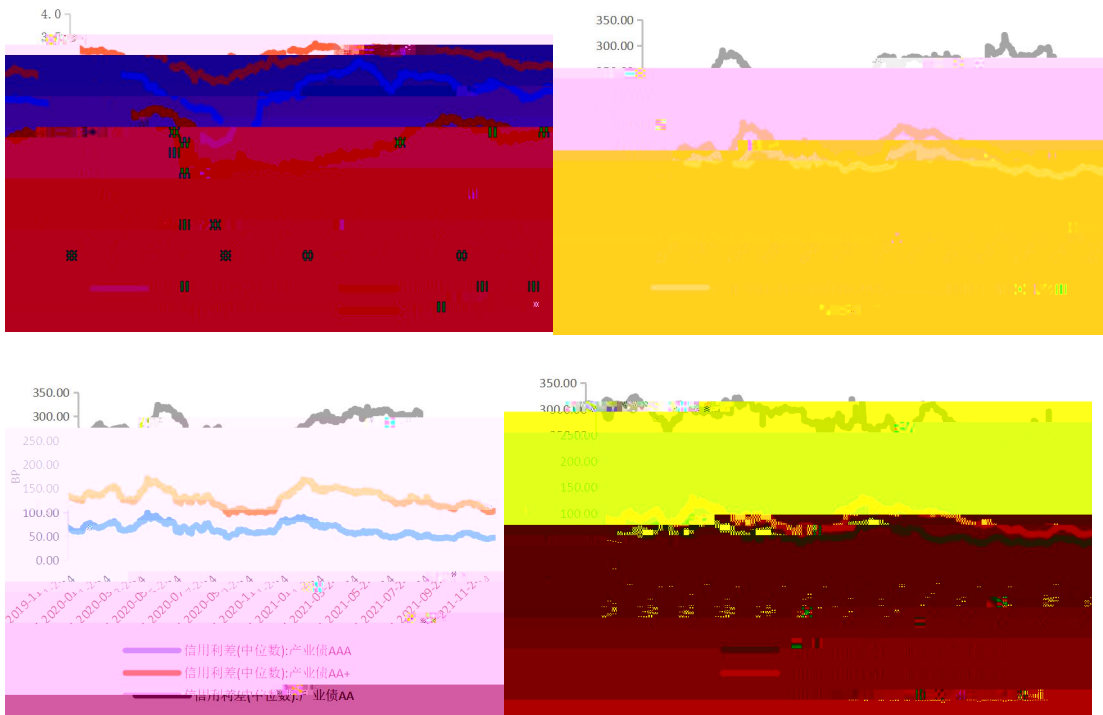
AA

AA+

"

" "

"

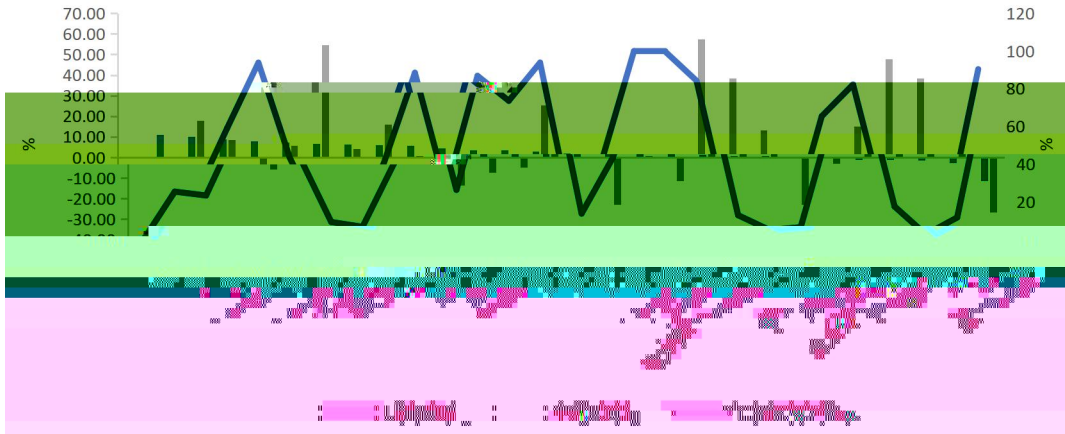
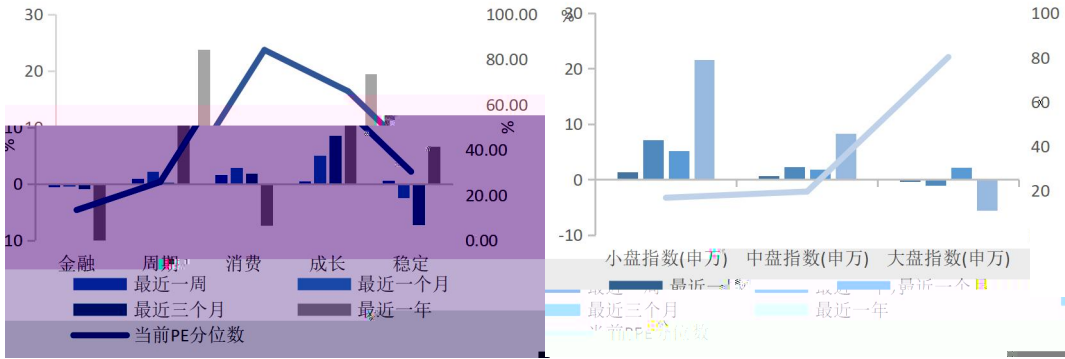


5

QREMA  
P

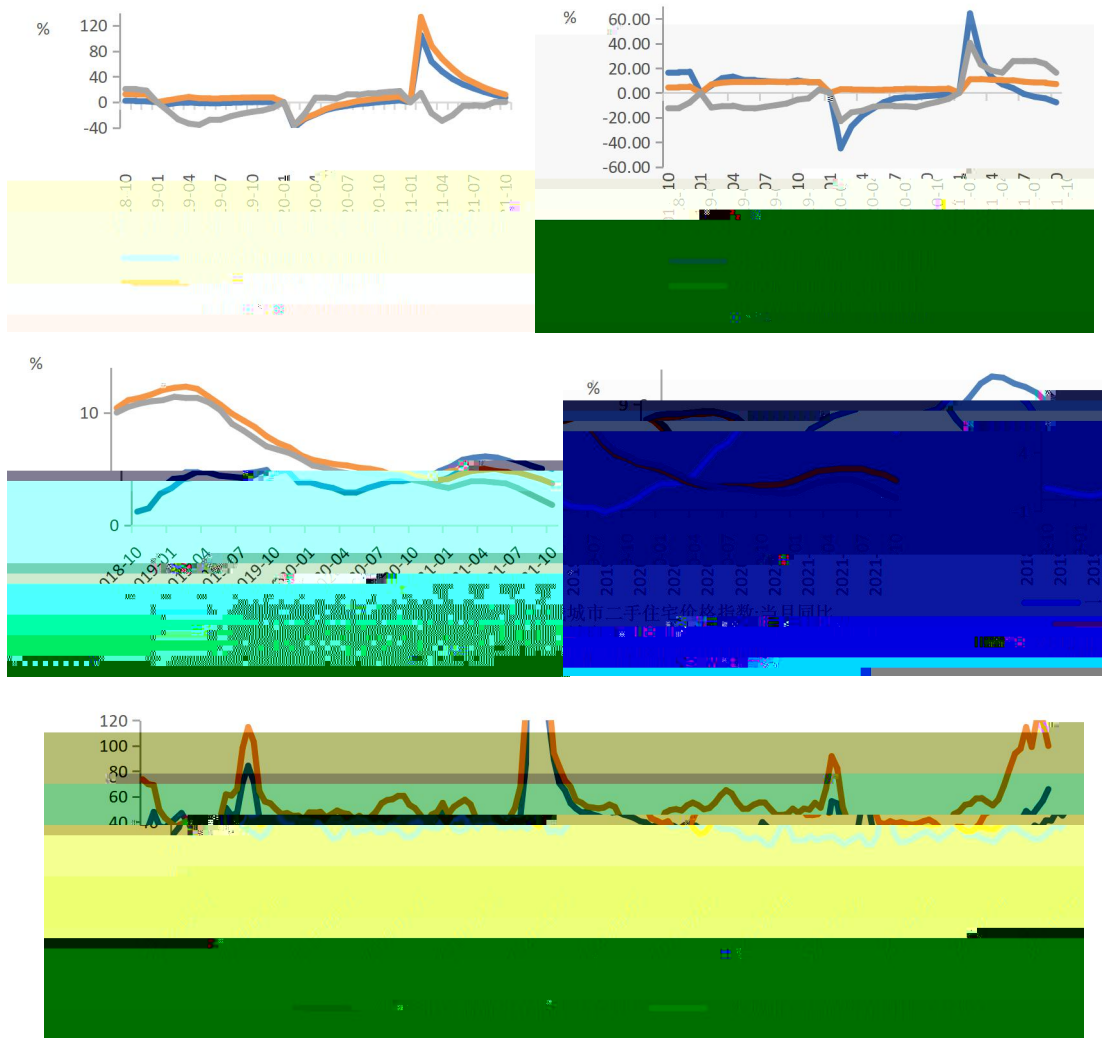
&\$%&%'







7







5

2021	11	15			"	"
81		71			10	
1.						
1		"			"	
	2				"	"
81		16	"	"		
2						
				81		212. 49
10		82	39	71		130. 10
		10				1



2  
2  
p " "  
B  
B

8

p " "	" "

4

1

2

50

16



	"	"	
3			"
"			

